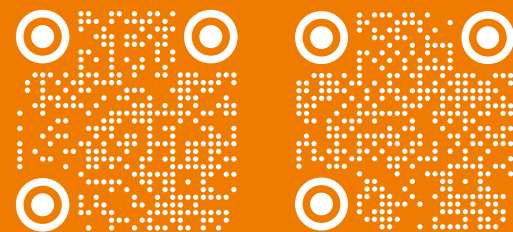




LIGHT without electricity
wires

8 - 800 - 2000 - 602
from 8 am to 7 pm Moscow time



NUMBER ONE IN RUSSIA

SOLAR LIGHTING FOR TRUE PROFESSIONALS



SOLARGIFICATION OF THE COUNTRY

Natural lighting is a fundamental component of architecture. Unconditional compliance with lighting standards affects the design of buildings and the cost of construction and operation. Whether in residential buildings, offices, educational institutions or public spaces - the approach to lighting determines functionality and atmosphere.

However, modern construction faces a number of serious problems. Restrictions related to lighting standards, high costs of land plots, low yield of usable space during design and low rental rates for basements and rooms without windows - all this leads to increased construction costs and decreased accessibility.

We are in "**Solargy**" We offer an innovative solution to these problems. Our technology improves access to natural light, reduces climate control costs and expands the overall space. This is a revolutionary approach that offers great value without additional costs.



THE ONLY MANUFACTURER OF NATURAL LIGHTING SYSTEMS IN RUSSIA

LIMITATIONS THAT AFFECT AT THE COST OF CONSTRUCTION



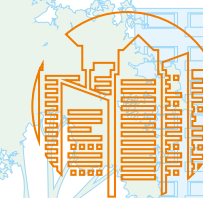
HIGH PRICE
LAND PLOTS



CONSTANTLY SMALL YIELD OF EXPENSIVE USEFUL
AREA DURING DESIGN



LOW RENTAL COST OF BASEMENTS AND
PREMISES WITHOUT NATURAL



LIMITATION OF BUILDING DENSITY DUE TO
COMPLIANCE WITH NATURAL LIGHT STANDARDS



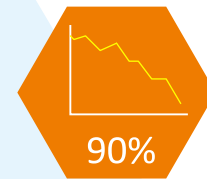
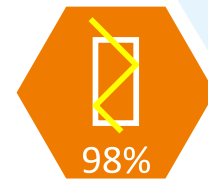
MODERN ARCHITECTURAL SOLUTION - CLIENTS WILL APPRECIATE THE TECHNOLOGY OF YOUR PROJECT. FIGHT GUIDES ARE A TREND IN MODERN ARCHITECTURE AND DESIGN, BECAUSE THEY CAN SERVE A "HIGHLIGHT" FOR ANY INTERIOR



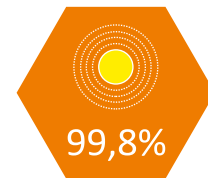
COMPLIANCE WITH STANDARDS

SOLARGY light guides provide adequate natural lighting in rooms and make staying in them comfortable

The light guide is mirror well, transmitting sunlight with minimal loss



The light guide is a comprehensive measure to reduce the negative impact of a building on the environment

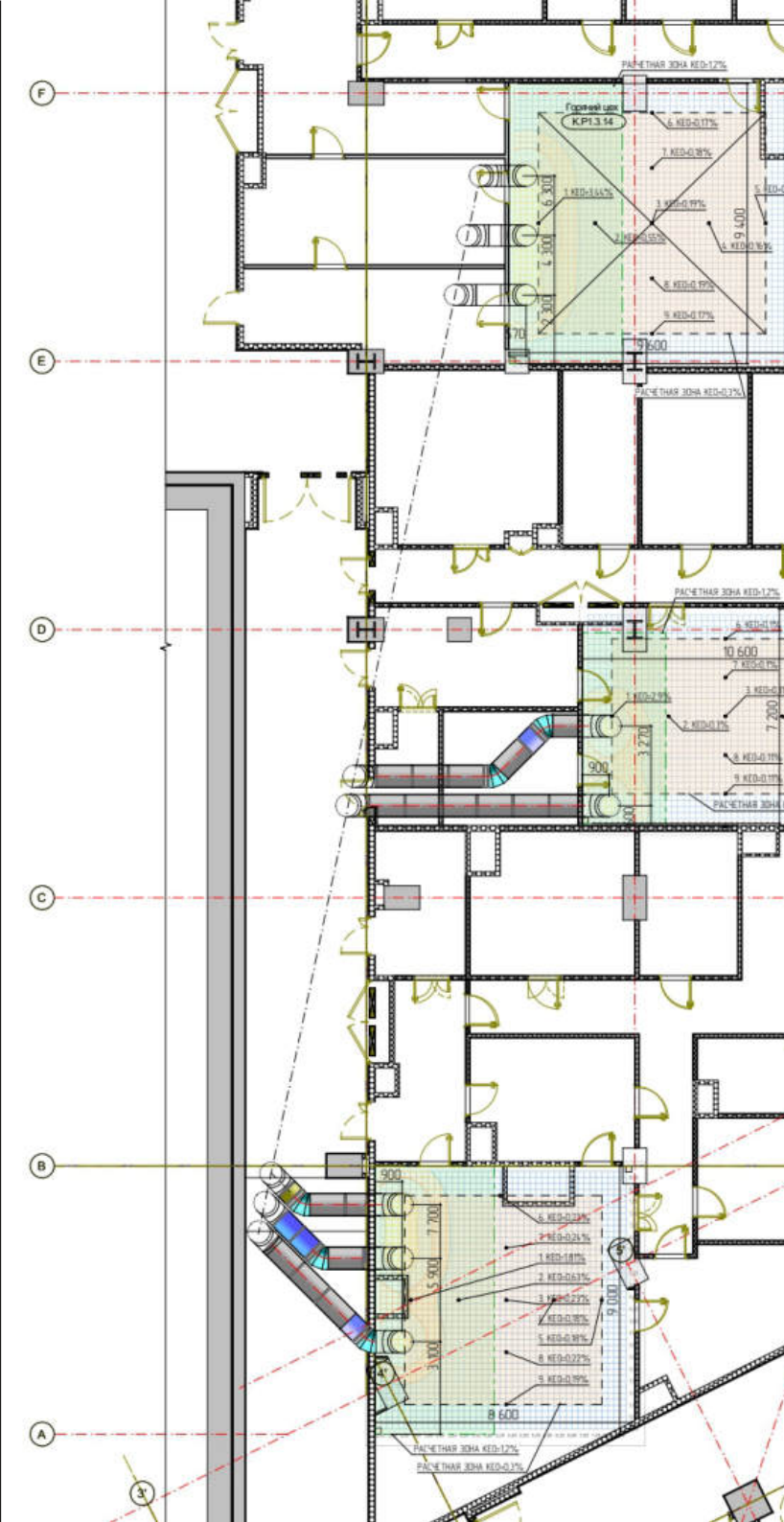


Light guide reduces building energy costs by up to 90%

The light guide stores and transmits spectral composition of natural light without distortion



WE'LL DO THE CALCULATIONS NATURAL LIGHT FACTOR, INSOLATION FOR YOU



LIMITATIONS THAT AFFECT AT THE COST OF CONSTRUCTION



ECONOMIC EFFECT

- Increase in construction area
- Increase in usable areas
- Transfer from low-liquid premises to high-liquid ones
- Increasing the density of civil and industrial development by 4 times and 2 times, respectively



TECHNOLOGICAL EFFECT

- Compliance with sanitary standards during design, passing examination
- Reducing operating costs up to 70%, heating up to 25%, air conditioning 30%, electricity 82% Increasing the service life of artificial lighting devices by 5 times
- = Creation of a comfortable light environment

Light guides provide standards from a minimum Natural Light Factor value of 0.1% to a maximum of 4 2% in ,rooms in the absence of windows



EASY MAINTENANCE. THE MOUNTED LIGHT GUIDE DOES NOT NEED CONSTANT CARE. DUE TO THE HIGHLY THOUGHT OUT DOME SHAPE, ACCUMULATED DUST IS EASILY WASHED AWAY RAIN WATER, AND THE SNOW THAT FALLS DOES NOT STAY ON THE SURFACE

INSTALLATION POSSIBILITIES

SYSTEM COMPOSITION

ROOF SOLARGY SW

SMOKE EXHAUST HATCH

FACADE SOLARGY WL

LIGHT AERATOR
SOLARVENT

LIGHT-SCOPE

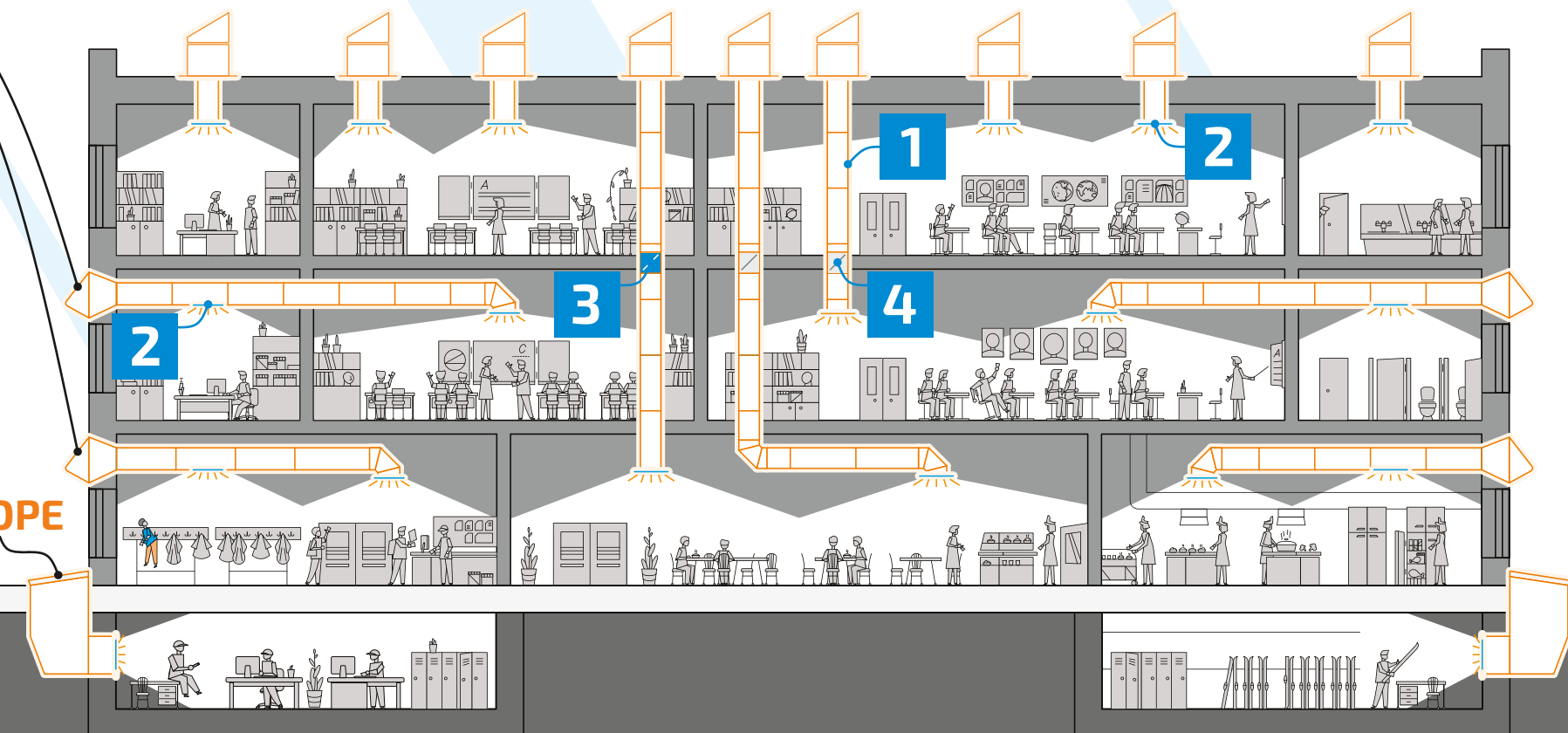
1 LIGHT MINE

2 LIGHT DIFFUSER

3 FIRE VALVE

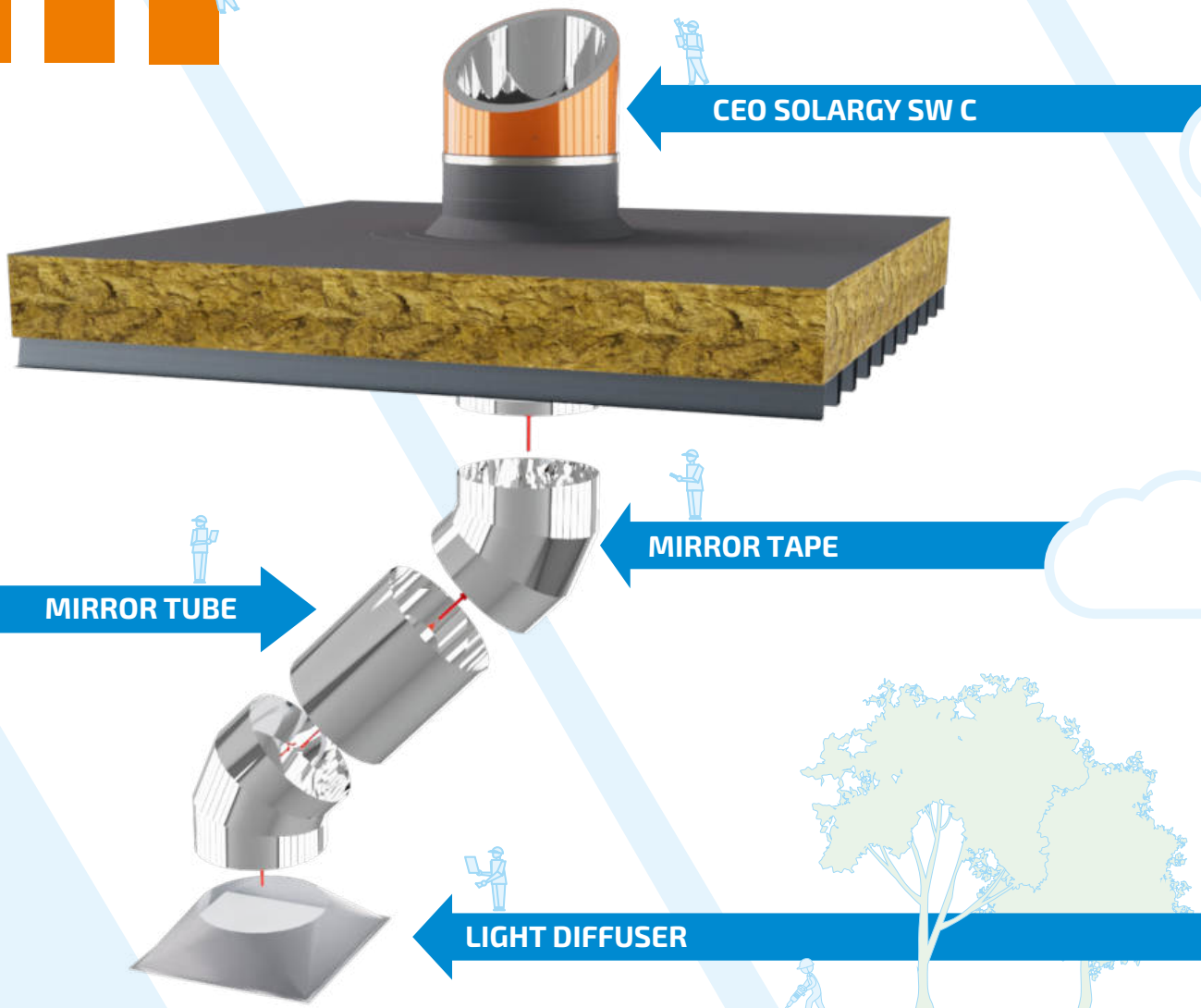
4 DIMMER

THE UNIQUE ADVANTAGE OF THE SOLARGY SYSTEM IS THE POSSIBILITY OF TRANSPORTATION LIGHT NOT ONLY FROM THE ROOF, BUT ALSO FROM THE EXTERNAL WALLS, CROSSING THE FLOORS AND DIRECTING THE LIGHT IN TARGET ROOM



WHAT IS A FIGHT GUIDE

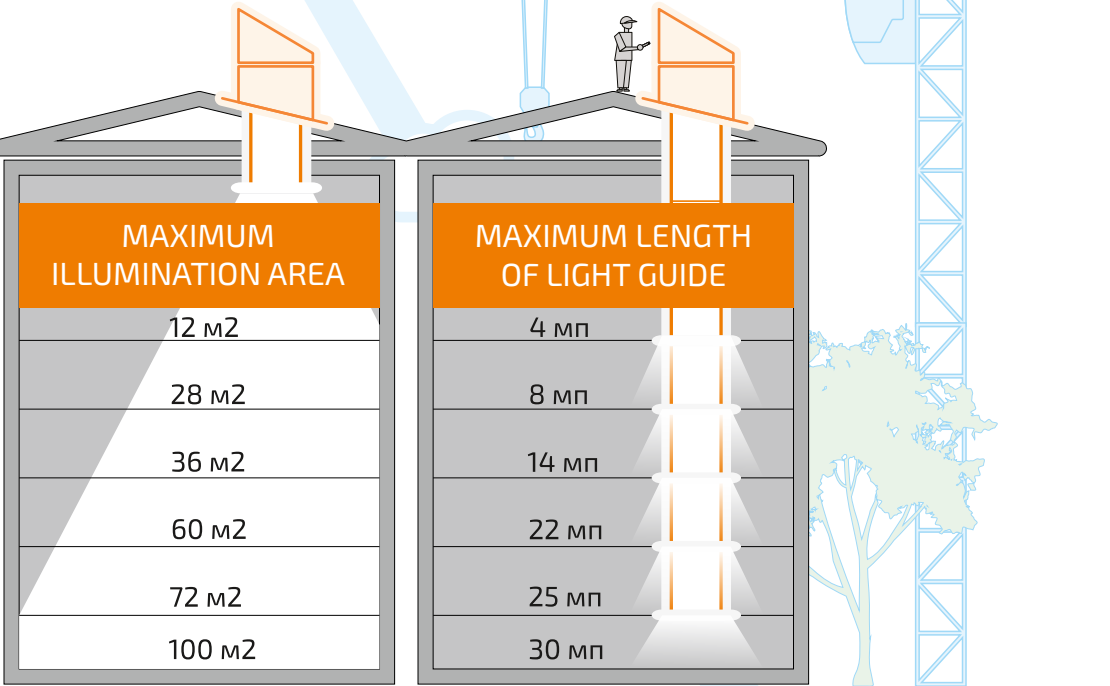
Light guide **Solargy** is an innovative device for transporting sunlight into a windowless room, working without wires or electricity.



The efficiency of the light guide is at least 82%. At the same time, such positive qualities of natural lighting are preserved as a continuous spectrum of light, the natural rhythm of illumination corresponding to the human biological clock, the natural dynamics of natural light, which makes it possible to judge the weather outside, i.e. ensure maximum connection with the external environment.

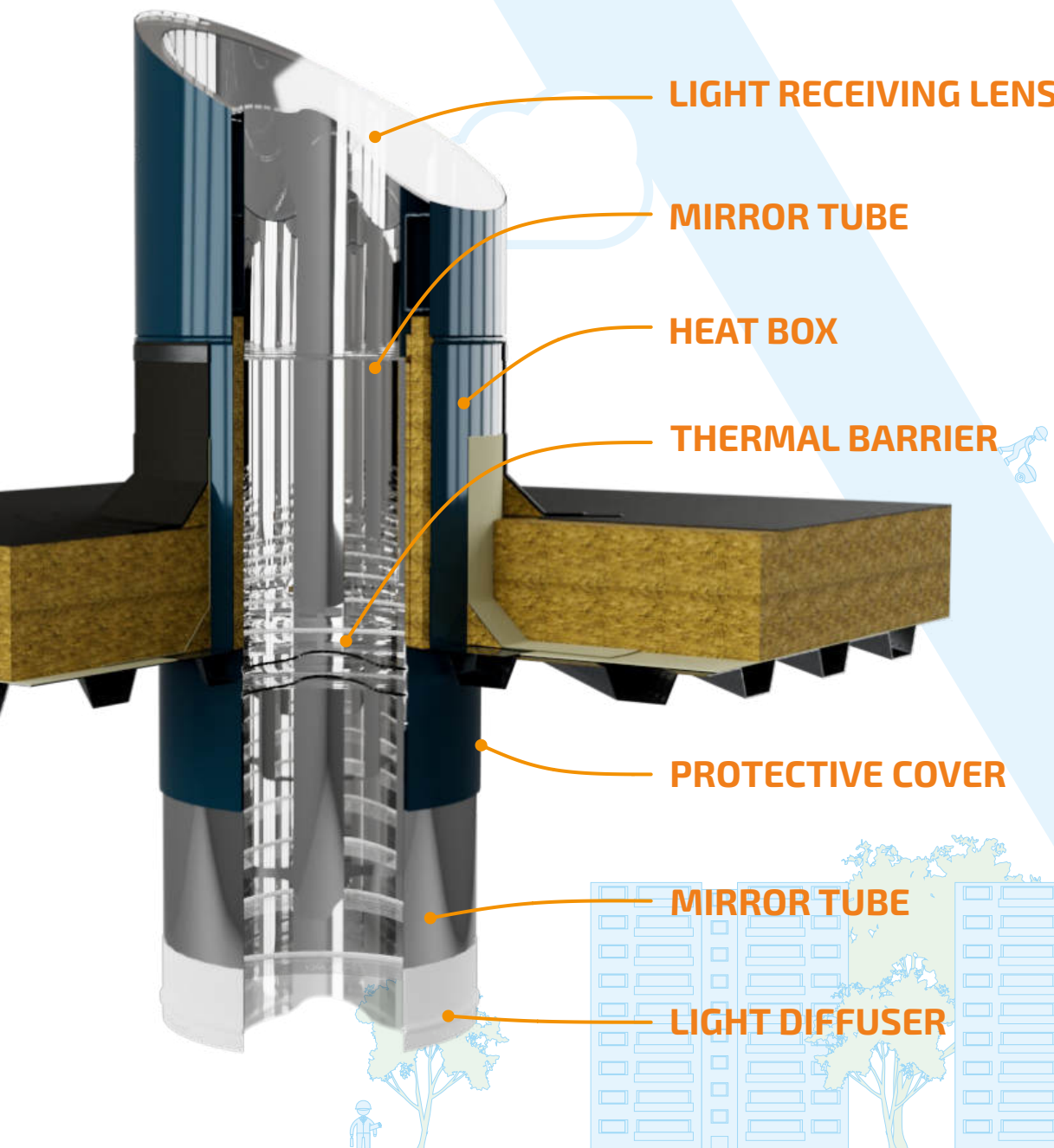
MAXIMUM INDICATORS OF LIGHT GUIDES SOLARGY SW

For light guides SW, SW W, SW F	DIAMETER	Lighting, lux			
		Summer		Winter	
SW 250	250 mm	100	150	75	110
SW 400	400 mm	270	410	200	300
SW 530	530 mm	490	750	330	500
SW 700	700 mm	790	1190	520	790
SW 750	750 mm	880	1330	590	885
SW 900	900 mm	1310	1970	820	1230



HELP IN PASSING THE EXAMINATION

WE DESIGN FOR YOU



System **SOLARGY**- anti-aircraft lamp with mirror shaft with directional reflection of the walls, transmitting solar light with 82% efficiency



Special form lets through as much as possible sunlight and daylight



The dome is made of high-strength plastic with translucency more than 94%



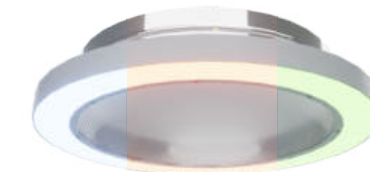
Not on the dome the rain lingers snow and mud.

LIGHT DIFFUSERS SYSTEMS

LD S C Ceiling



LD R COMB LED Combined



LD R WITH LED Ceiling



LD R Frameless Ceiling-less



LD R WITH LED Ceiling



THE WORLD'S ONLY DOME WITH A LIGHT CAPTURE RATIO OF 122%

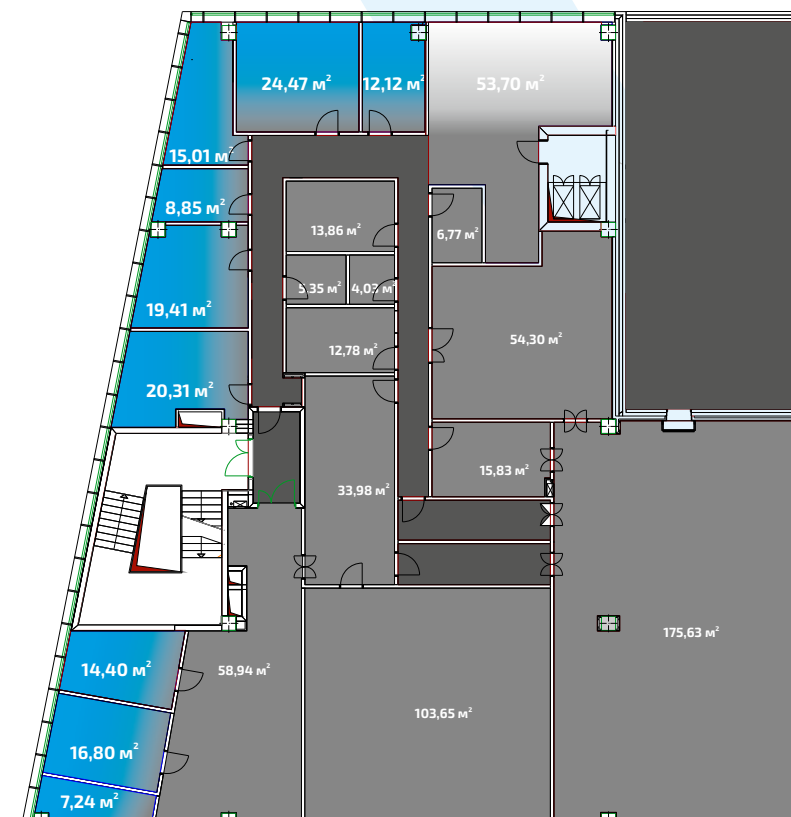
SPECIAL SHAPE MAXIMIZES SUN AND DAYLIGHT TRANSMISSION



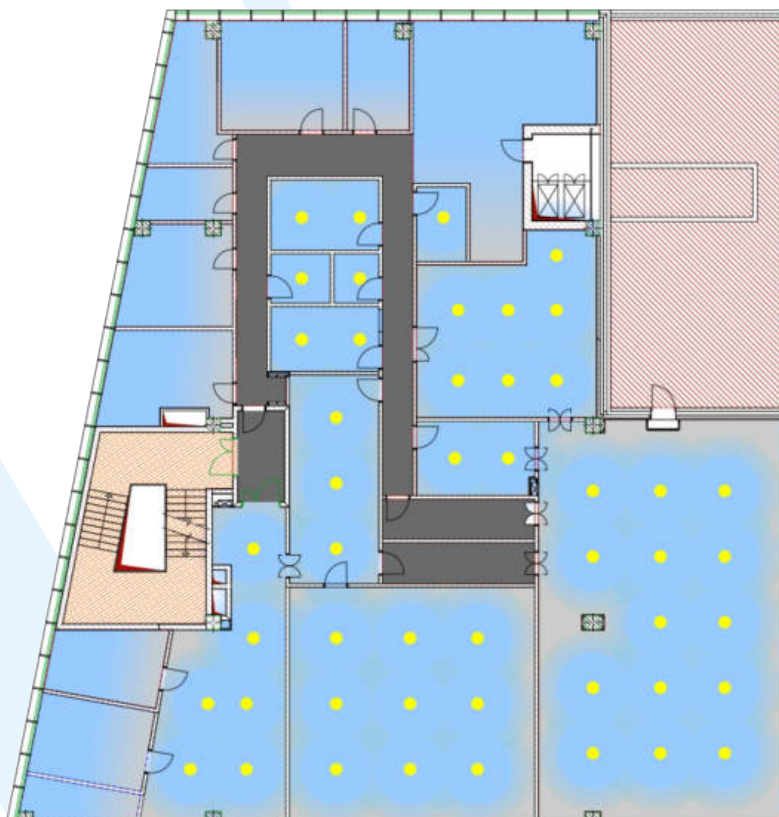
OBJECT: PRODUCTION OF TASTY COFFEE, IZHEVSK INSTALLED: CEO SOLARGY SW C, 14 systems
Lighting area: 1120 m2

IT'S PROFITABLE

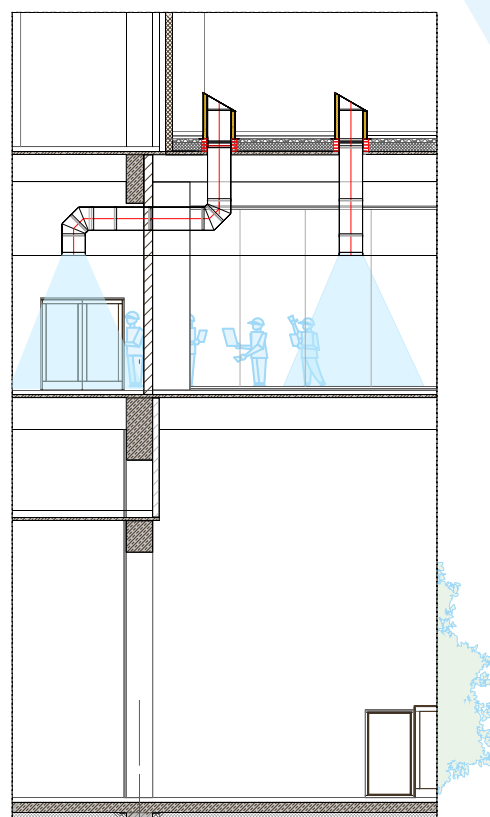
The project was completed in accordance with the requirements of SP 52.13330. The total lighting area is 200 m². More than 70% of the area cannot be used without natural light.



The use of Solargy light guides in the project made it possible to fulfill the requirements of SP 52.13330 and create more than 40 jobs. The additional lighting area with light guides amounted to 481 m².



Fiber cross section roofing type



The use of light guides complies with all lighting standards and environmental requirements.



Light guides reduce energy costs, improve people's health through natural light in rooms and contribute to optimal functionality of buildings.



The introduction of light guides improves the quality of interior lighting, and increases the number of construction areas and the level of space utilization.



The use of light guides provides uniform and pleasant lighting, reduces energy costs, reduces the cost of maintaining buildings and improves conditions for people's residence and work.

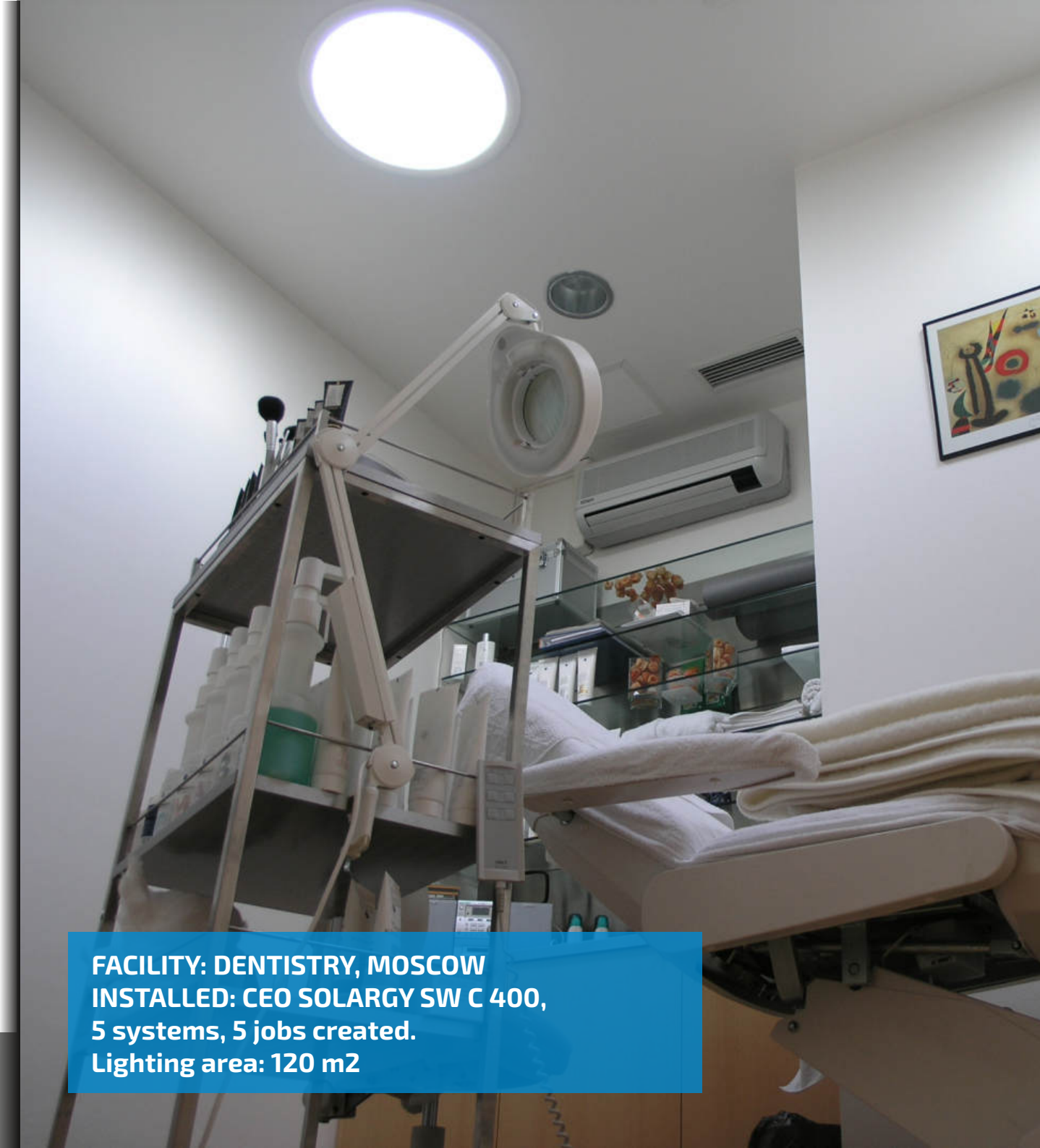


Light guide technology is easy to install and provides optimal illumination in all weather conditions, making it an attractive and effective solution for any project.

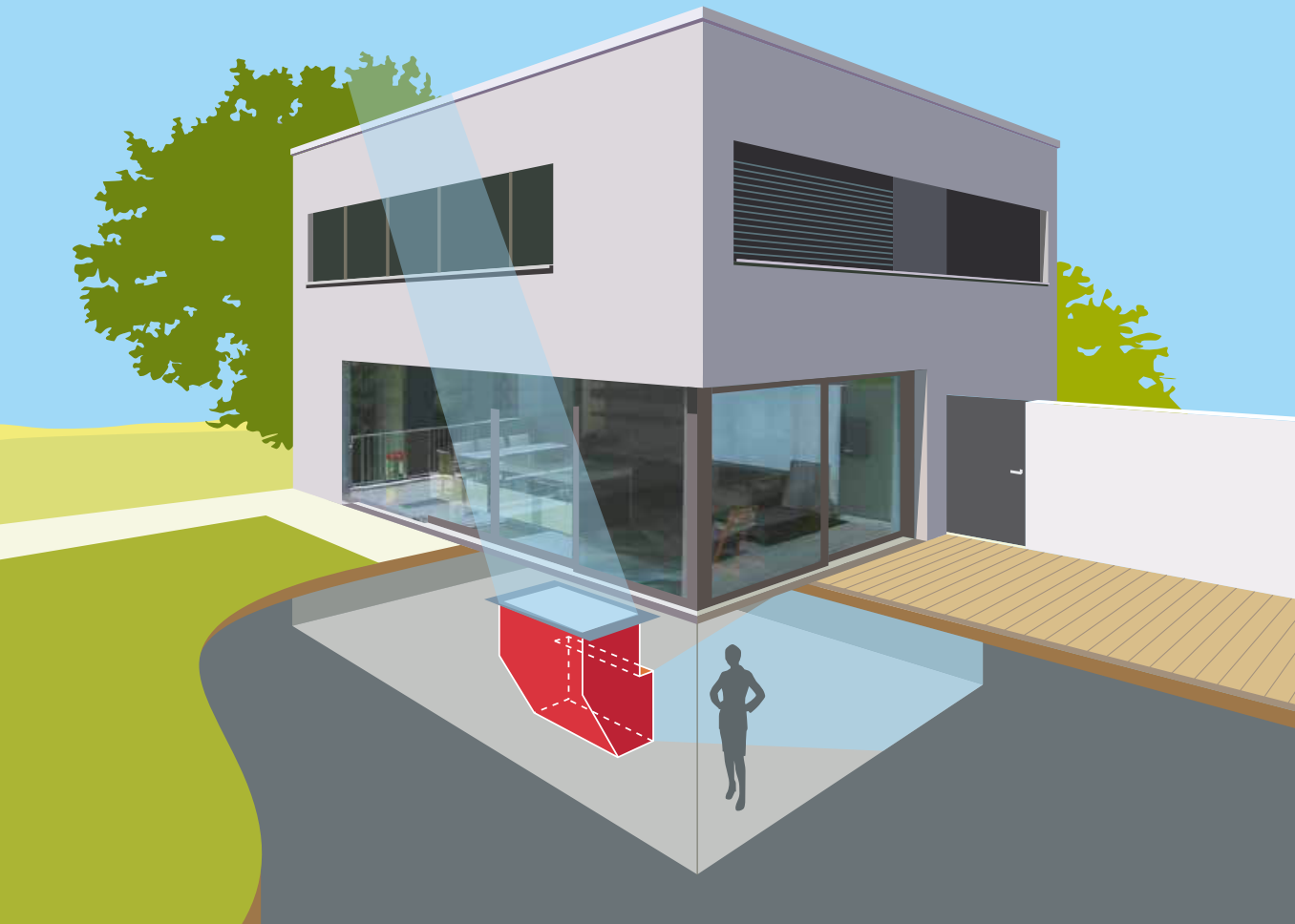
CIRCADIAN LIGHTING -
HUMAN CENTERED LIGHTING

IMPLEMENTED PROJECT. LEROY MERLIN, MOSCOW

FACILITY: DENTISTRY, MOSCOW
INSTALLED: CEO SOLARGY SW C 400,
5 systems, 5 jobs created.
Lighting area: 120 m²



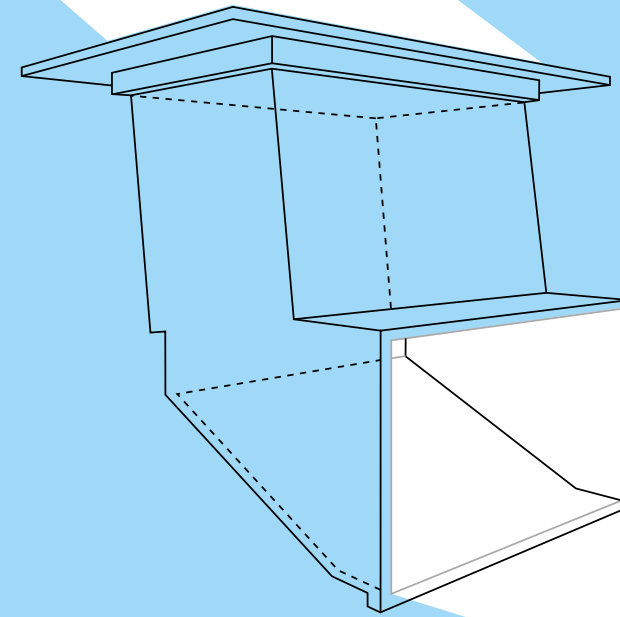
BASEMENT LIGHTING



FLIGHTSCOPE represents an innovative solution that can transform basements, usually devoid of natural light, into bright and functional areas for living and working.

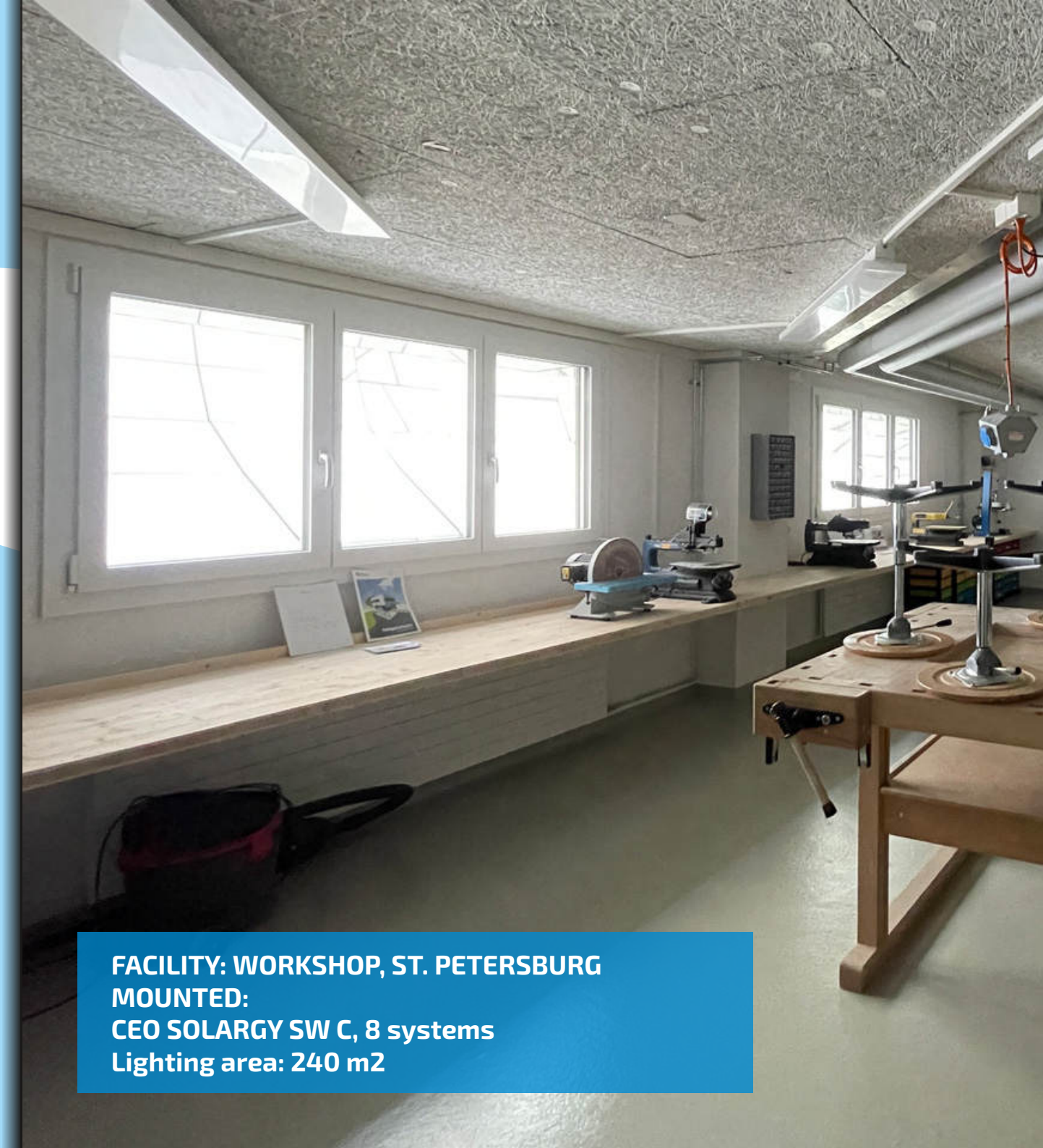
Its key feature is using a special mirror module that directs and reflects light into the room, creating a feeling of natural light. This effect not only improves the visual comfort and well-being of the users, but also has a positive impact on the space itself, increasing its value.

The intelligent and efficient daylighting system implemented in the lightscope not only changes the microclimate of the room due to the influx of light, but also helps to save energy resources and reduce the cost of artificial lighting. Thanks to the high efficiency of this system, premises acquire unique illuminated characteristics, which makes them more attractive to residents and potential tenants.



The additional benefits that the use of a lightscope brings are noticeable to both property owners and investors. Increasing natural light can significantly increase the attractiveness of premises in the rental or sales market.

In conclusion, the lightscope not only transforms basements into cozy and bright spaces, but also demonstrates the importance of innovative approaches to providing natural light in construction and interior design. Thanks to its use, the comfort and functionality of the premises are improved, and their value and attractiveness on the real estate market increase significantly.



FACILITY: WORKSHOP, ST. PETERSBURG
MOUNTED:
CEO SOLARGY SW C, 8 systems
Lighting area: 240 m2

VENTILATION AND FIRE SAFETY

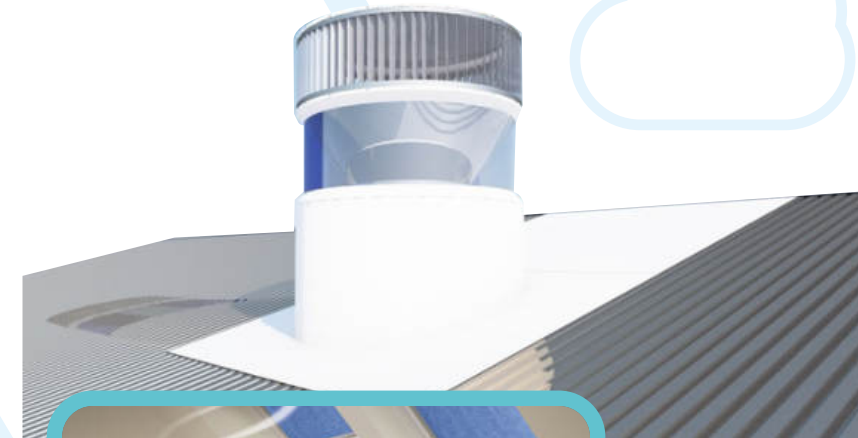
LIGHT AERATOR

The light aerator is primarily designed to combat excess heat and humidity in the room. Both natural and forced ventilation of the premises are possible.

When installing the aerator into a light guide, not only sunlight but also fresh air will enter the room.

ADVANTAGES OF USE

- **COMPLIANCE WITH GOSTS AND STANDARDS**
Compliance with KEO standards and SanPiN requirements. When installing a light aerator, the roof structure does not lose its rigidity.
- **SAVING RESOURCES**
Electricity due to natural lighting and the absence of electric fans.
- **CREATING A COMFORTABLE ENVIRONMENT**
Natural ventilation of premises. Quickly eliminate unpleasant odors.



FRESH
THE AIR IS IN YOUR
INDOOR



COZY AND COMFORT

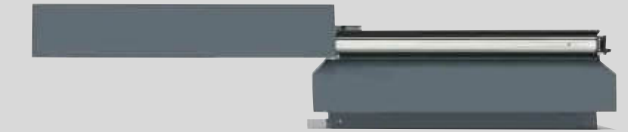
SMOKE EXHAUST HATCHES

Smoke exhaust hatches effectively remove flue gas, which, in the event of a fire in the room, certainly rises and then quickly falls down.

The presence of smoke exhaust hatches allows us to ensure a high level of safety for people in the smoke zone.

ADVANTAGES OF USE

- **FIRE RESISTANCE**
Removing hot air from the premises where the fire is located. This causes a decrease in temperature in the premises and contributes to longer resistance of structures to fire.
- **SECURITY**
Partial prevention of the penetration of hot gases into rooms located adjacent to the source of fire spread, ensuring the ability to breathe in rooms. This allows you to carry out rescue operations in them and use any equipment to extinguish the fire.



Tested according to EN 12101-2 standards

- ⌚ Durability: Re1000, open/close cycle more than 10,000 times.
- ❄️ Snow load SL 1000 - SL 2000
- 🌡️ Resistant to low temperatures (down to -25)
- 💨 Wind load WL 1500
- 🔥 Fire class B300

EN
12101-2

COMPLEX SOLUTIONS CREATE THE REQUIRED RESULT

RELIABLE SMOKE EXHAUST SYSTEMS
IMPORTANT COMPONENTS OF A FIRE SAFETY SYSTEM

SIGNIFICANT PROJECTS



IMA LAND TRADING HOUSE, LLC
OFFICE CENTER LIGHTING



NATIONAL CULTURAL CENTER KAZAN
NATIONAL LIBRARY LIGHTING



"OSTROV MECHTY" INDOOR PARK
KITCHEN LIGHTING



SAVINGS ON AIR CONDITIONING

Protection from direct solar radiation allows you to **SAVE** on air conditioning - both when designing systems and during their operation.



ENERGY EFFICIENCY BUILDING

Reducing the area of window openings directly proportionally increases the energy efficiency of the building.



SAVING ELECTRICITY

Operation - from 40 to 100% energy savings for lighting, depending on the operating mode



FACILITY: SIMALAND, EKATERINBURG
INSTALLED: CEO SOLARGY SW C 750,
78 systems, 2000 jobs created
Lighting area: 2500 m2

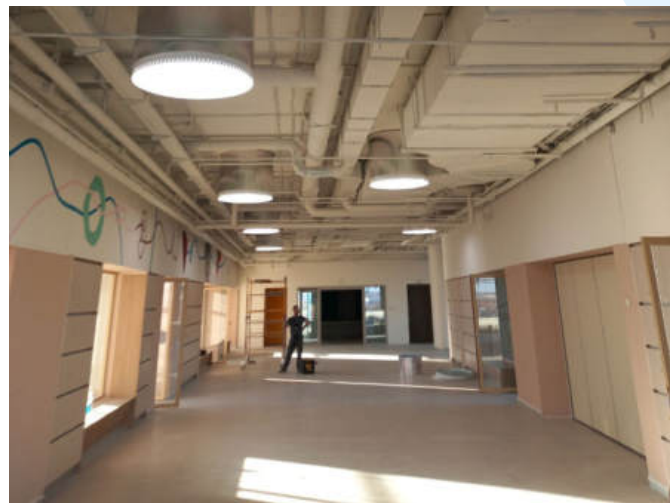
INCREASING THE RENTAL COST OF YOUR PREMISES

**GUARANTEED TIME
OPERATION OVER 25 YEARS**



STONE TEMPLE

STONE LAMA'S TEMPLE LIGHTING



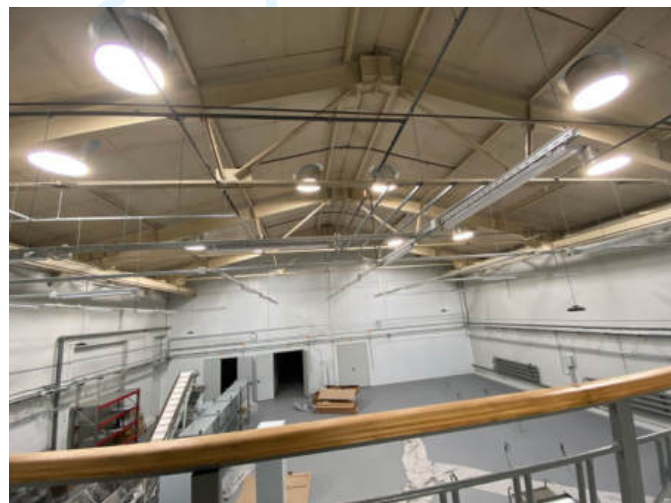
GOVERNOR'S LYCEUM

HALL LIGHTING



HYDROELECTRIC POWER STATION - 2

UNDERGROUND RESTAURANT LIGHTING



COFFEEMANIA PRODUCTION

ENGINEER'S ROOM LIGHTING



MILKOM

PACKING CENTER LIGHTING



MERCEDES CENTER

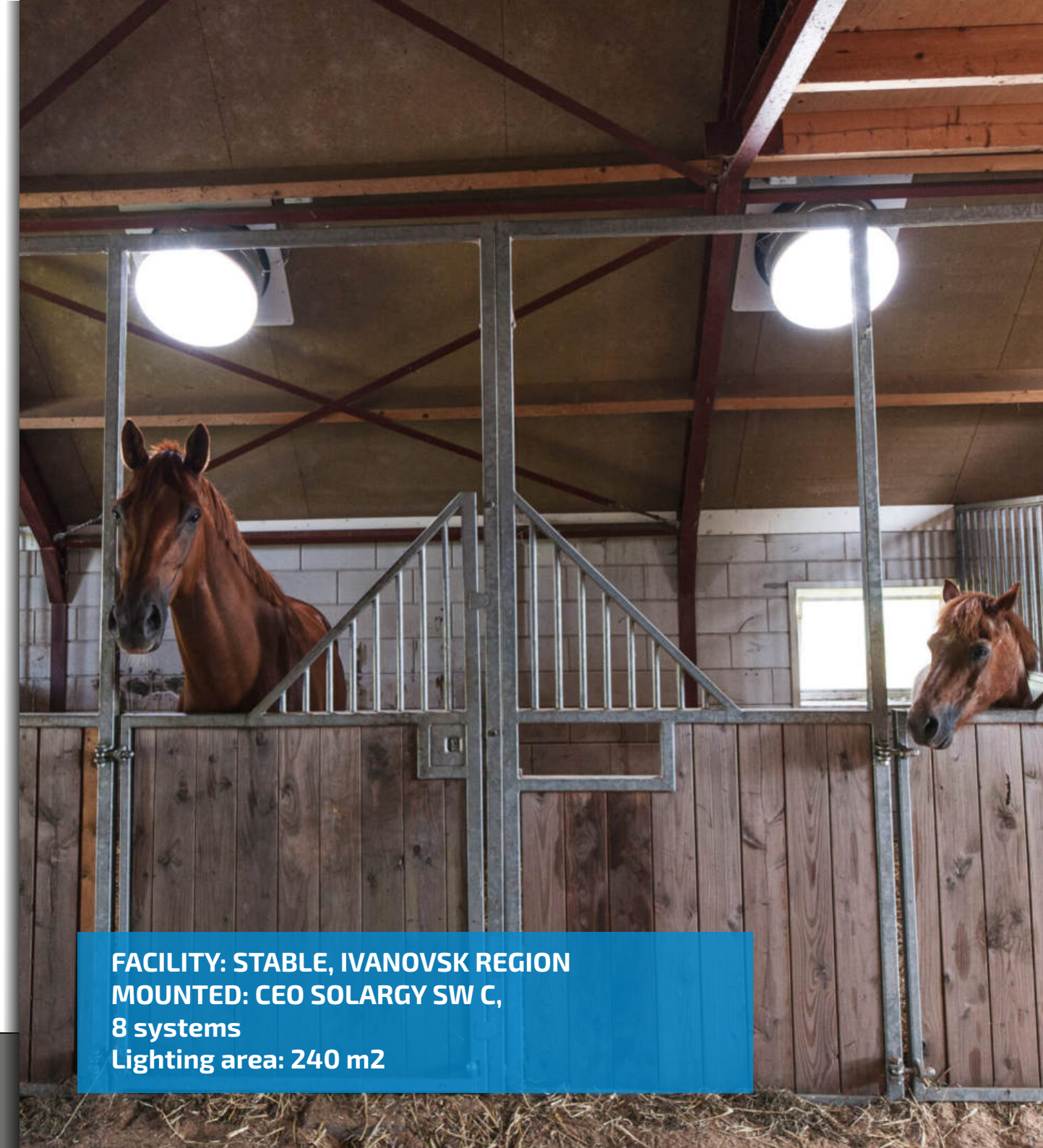
LIGHTING FOR THE CLIENT WAITING AREA

SOLARGY

The Solarzhi18 company was founded in 2011 and today is the only **registered** in Russia domestic A leading manufacturer of daylight transmission systems using hollow mirror light guides. Solarzhi18 is an expert in the field of natural light; company employees take part in the development of Codes of Practice for the design of natural and combined lighting, namely:

Amendment No. 1 to SP 419.1325800.2018
Amendment No. 2 to SP 367.1325800.2017
Amendment No. 2 to SP 52.13330.2016

The company specializes in the development and production of systems for transmitting and transporting light to remote premises, which make it possible to increase the brightness of natural and artificial lighting in premises (domestic, industrial, commercial, medical), complying with sanitary standards



FACILITY: STABLE, IVANOVSK REGION
MOUNTED: CEO SOLARGY SW C,
8 systems
Lighting area: 240 m2

FIGHT GUIDES EASILY PROVIDE ALL REQUIRED NATURAL LIGHTING STANDARDS
AND BRING LIGHT WHERE IT IS IMPOSSIBLE TO INSTALL WINDOWS

MORE THAN 3500 SYSTEMS INSTALLED

PATENTS AND CERTIFICATES



SOLARGI IS A CO-DEVELOPER OF THE RULEBOOKS

WHY SOLOGY'S LIGHT GUIDES?

VERSATILITY

Light guides can be installed at any stage of construction

LIGHTING OF REMOTE PREMISES

Light guides can illuminate rooms where it is not possible to install windows, for example: warehouses, basements, workshops

DESIGN FLEXIBILITY

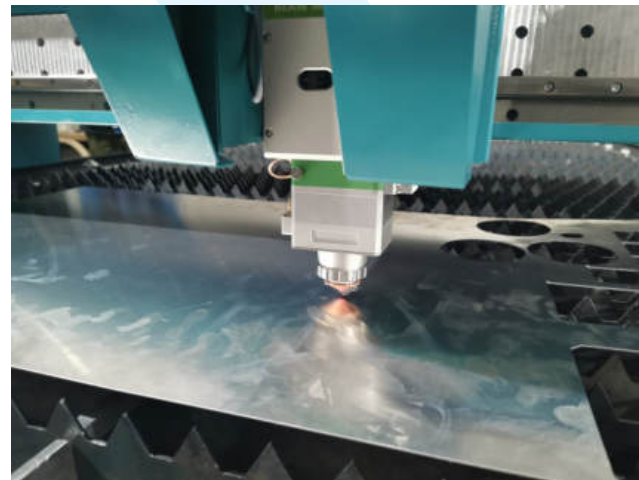
SOLARGY light guides can pass through floors, roofs, walls, and illuminate underground structures

MORE THAN 175,000 M2 WERE LIGHTED



FACILITY: STORE, MOSCOW REGION
MOUNTED:
CEO SOLARGY SW C, 18 systems
Lighting area: 1200 m2

PRODUCTION OF SOLARGY



PRODUCTION AND ASSEMBLY

The production of components and assembly into large assembly units takes place at the production facilities of **SOLARGY**.

The unique machine park allows us to maintain high quality criteria.

Compliance with the light guide assembly technology affects the performance characteristics, therefore assembly work is performed by highly qualified personnel.



DELIVERY AND INSTALLATION

We deliver and install light guides on our own.

Solar Light Transport Systems
We deliver turnkey.

We take full responsibility for the result.

OWN QUALITY CONTROL SYSTEM FROM PRODUCTION TO EQUIPMENT INSTALLATION

TOTAL LENGTH OF LIGHT SHAFT
WAS MORE THAN 50 KILOMETERS



FACILITY: NATIONAL LIBRARY, KAZAN
MOUNTED BY: CEO SOLARGY SW C,
8 systems
Lighting area: 240 m2

ZOOMING

Expandable control modules and connectivity unlimited number of sensors (temperature, motion, humidity, etc.)

ONLINE

Managing communications via the Internet with your own professional software from any device

LIGHTING SCENARIOS

Instant change of light scenes, zones, and operating modes, as well as lighting intensity.

MASH - NETWORK

SOLAROS monitors and transmits data:

- state of the lamp;
- consumption;
- malfunction;
- environmental parameters, etc.

MANAGE EVERYTHING ENGINEERING COMMUNICATIONS

The SOLAROS hardware and software complex has the ability to connect digital and analog devices, which allows you to control:

- light
- climate
- security
- water supply
- and other communications



INNOVATIVE LIGHTING IN AGRICULTURE

Modern challenges in agriculture require integrated approaches to increase efficiency and improve animal welfare.

SOLARGY 18 LLC is a leading player in the field of innovative lighting, providing solutions that meet the requirements of agricultural enterprises.

PROBLEMS OF AGRICULTURE. PAST PROBLEMS NEW SOLUTIONS

In the past, farmers faced problems with short daylight hours, uneven lighting, constant power consumption and the difficulty of integrating new systems into existing infrastructure.

SOLARGY 18 LLC successfully solves problems by offering comprehensive solutions based on advanced technologies.

CIRCADIAN AND BIODYNAMIC LIGHTING FOR ANIMAL HUSBANDRY

One of the key solutions is the introduction of circadian and biodynamic lighting, which creates comfortable conditions for animals. This allows you to regulate daylight hours, corresponding to the biological rhythms of various animal species. Solar energy becomes a source of health and improves productivity.

BALANCED DIMMING FOR UNIFORM LIGHTING

To solve the problem of uneven lighting, SOLARGY 18 LLC offers balanced dimming technology. This allows you to maintain a stable level of light, eliminating glare and dark spots in the farm premises.



Remote control

Integration (DALI, zigbee.)

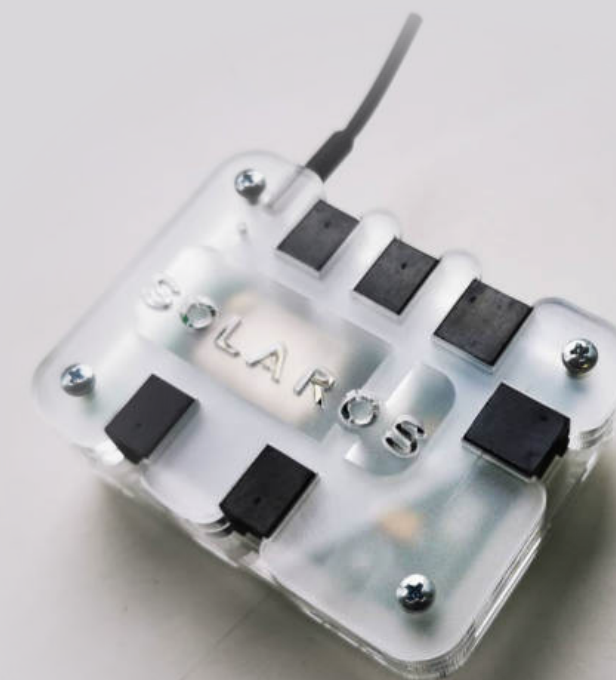
Intuitive interface

System reliability and security

Autoscaling

Automatic operation

Biodynamic lighting



COMPLEX
ENERGY SAVING FROM 85%

HAS NO ANALOGUES ON THE RUSSIAN MARKET